



PV ALUMINIUM CARPORT



**AN ELEGANT CARPORT,
A GREEN ENERGY SOURCE.
EVERYWHERE.**



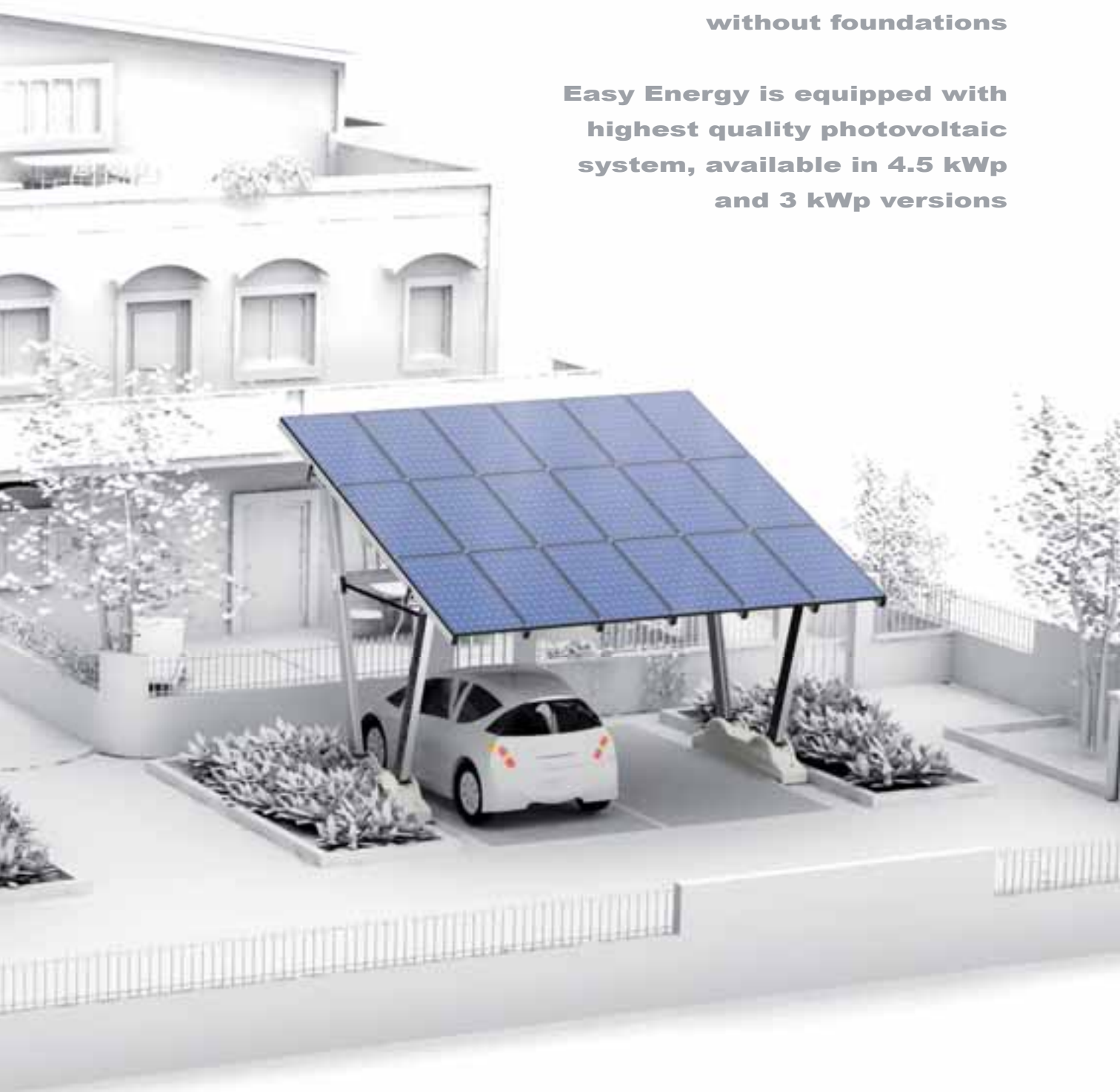
GIULIO BARBIERI
Special Modular Coverings



PRODUCE RENEWABLE ENERGY WHILE PROTECTING YOUR CARS!

**Our solar carports are installed
without foundations**

**Easy Energy is equipped with
highest quality photovoltaic
system, available in 4.5 kWp
and 3 kWp versions**

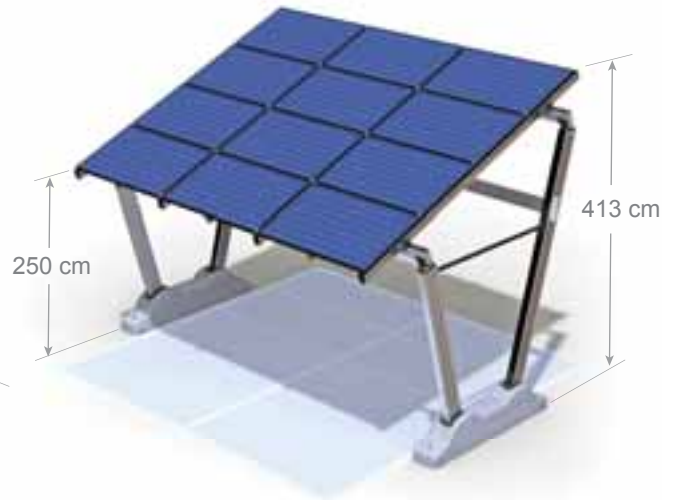


TECHNICAL INFORMATION

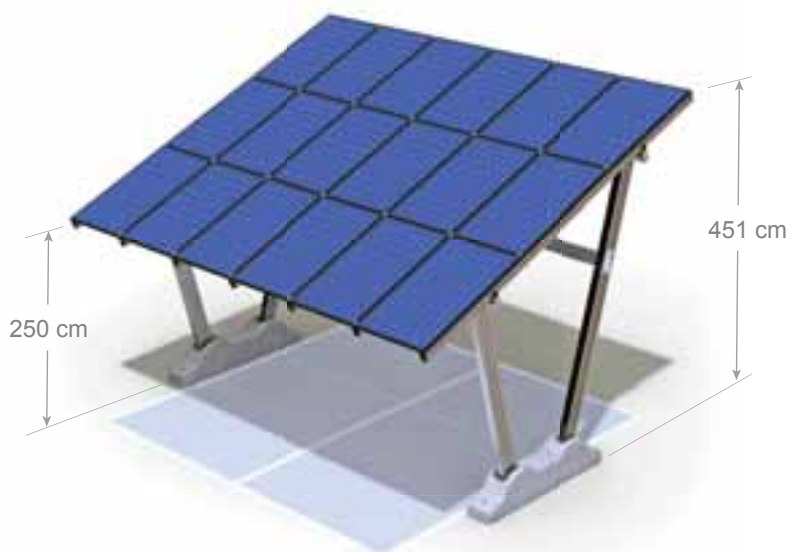
SUPPORTING STRUCTURE FEATURES:

- The aluminium silver anodized structure is certified and guaranteed. It is quick and easy to install. No need of foundation. On demand it is available in many colours.
- “Home Parking” needs no maintenance interventions over time, unlike wood and steel structures, which need recurrent protective treatments.

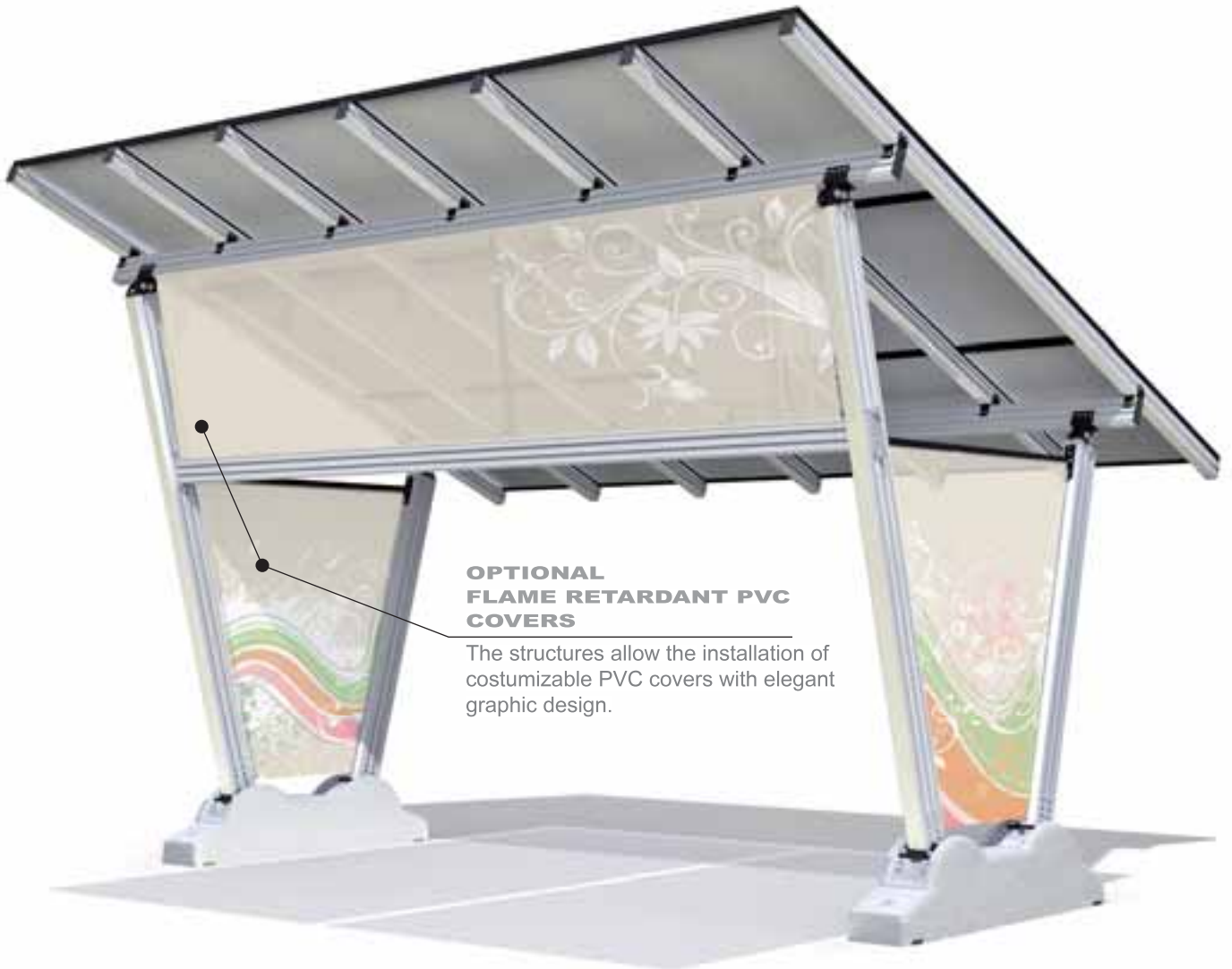
3 kWp VERSION: n. 12 PV BOSCH panels + n. 1 Inverter *



4,5 kWp VERSION: n. 18 PV BOSCH panels + n. 1 Inverter *



* = On demand it is available only the supporting structure ("Energy Parking" model), customizable and suitable for any kind of photovoltaic panel.



**OPTIONAL
FLAME RETARDANT PVC
COVERS**

The structures allow the installation of customizable PVC covers with elegant graphic design.

STRUCTURE - RANGE OF COLOURS

STANDARD

OUT OF STANDARD COLOURS



Anodized
silver
colour



RAL range

PVC FABRIC - RANGE OF COLOURS

Have a look at the fabric catalogue, Poly HR Opatex



112



272



444



878



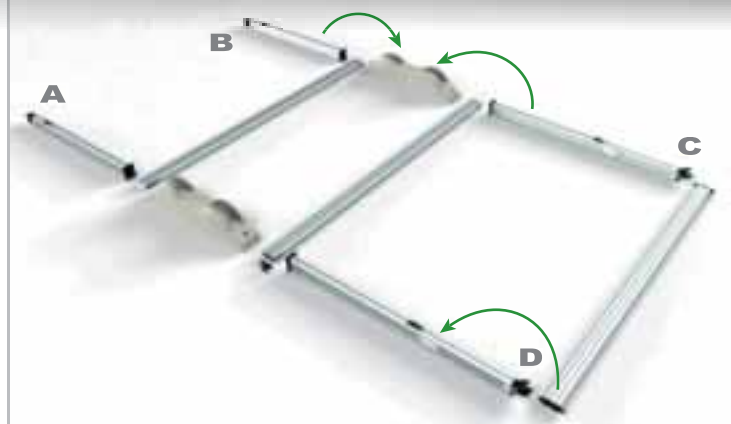
632

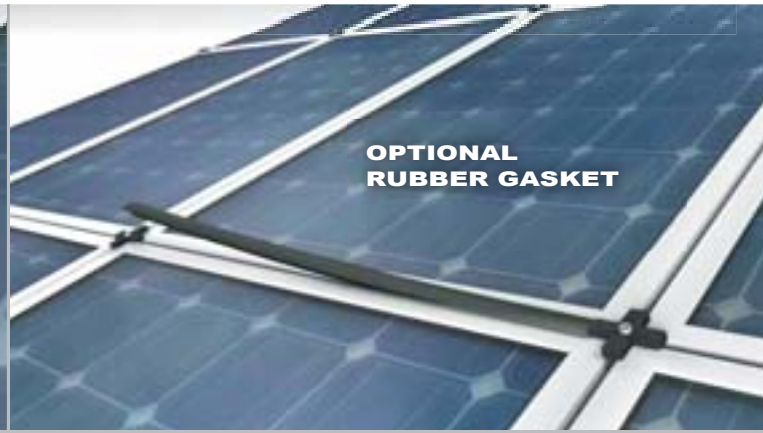
ASSEMBLING SYSTEM

DISPLAY THE VIDEO ON



GIULIO BARBIERI CHANNEL





**OPTIONAL
RUBBER GASKET**



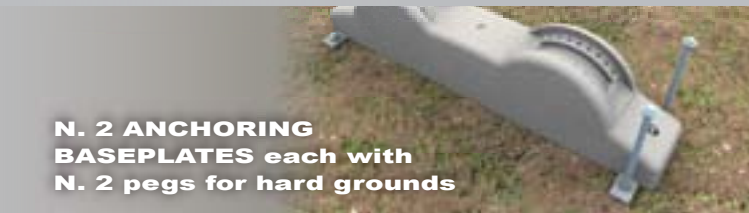
Inverter



**OPTIONAL
RAIN GUTTER
with clamps**



**ANCHORING
BASEPLATE for
concrete ground**



**N. 2 ANCHORING
BASEPLATES each with
N. 2 pegs for hard grounds**



**N. 2 ANCHORING
BASEPLATES each with
N. 6 pegs for hard grounds**



**N. 2 ANCHORING
BASEPLATES each with
N. 12 pegs for hard grounds**



**ANCHORING BASEPLATES
VERSION**

**Foundation
plinth**



Giulio Barbieri S.p.A.

Via Ferrara, 41 - 44028 Poggio Renatico (FE) - Italy
giulio barbieri@giulio barbieri.it
Tel. (+39) 0532 82.15.11, Fax (+39) 0532 82.15.55